

Addressing Health Inequalities in Accessing Antiviral Treatment

Julie Painter Senior Sister COVID Medicine Delivery Unit (CMDU)



Quality Improvement Awards 2024

Background

The Black Country CMDU delivers NICE TA 878: Nirmatrelvir plus ritonavir, sotrovimab, and tocilizumab for the treatment of COVID-19 in high-risk patients. An audit of 40 randomly selected patients out of 229 referrals received from 01/10/23 to 30/11/23 revealed that 92.5% of the referrals were white British, which did not accurately represent the diverse population of the Black Country. This led to the initiation of the QI project to address this disparity in this at-risk population.

SMART Aim

To increase awareness of CMDU among eligible non-hospitalised patients, to ensure that 15% more patients from diverse ethnic backgrounds, in addition to White British patients, receive the appropriate antiviral treatment within 7 days of experiencing COVID-19 symptoms or testing positive, by 30/06/24

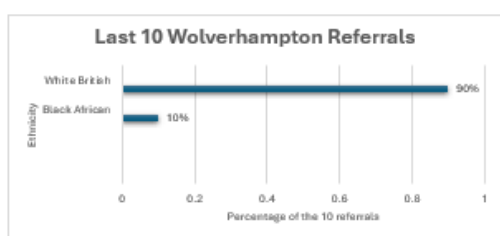
Mapping of the last 10 patients

The last 10 patients for each region in the Black Country after completing the first PDSA cycle.

- Walsall 100% of the last 10 patients expressed their ethnicity as White British

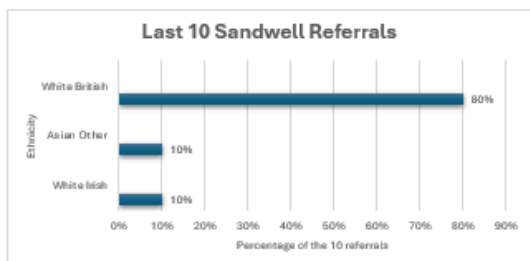
Results before the first PDSA cycle for Walsall: 80% White British, 10% Indian, 10% Mixed Asian other.

- Wolverhampton 90% of the last 10 patients expressed their ethnicity as White British



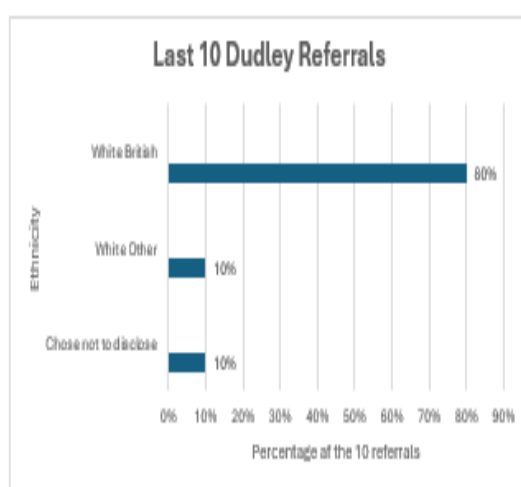
Results before the first PDSA cycle for Wolverhampton: 70% White British, 10% white other, 10% Indian, 10% Pakistani

- Sandwell 80% of the last 10 patients expressed their ethnicity as White British



Results before the first PDSA cycle for Sandwell: 90% White British, 10% Asian Other

- Dudley 80% of the last 10 patients expressed their ethnicity as White British



Results before the first PDSA cycle for Dudley: 100% White British

Plan to address the disparity

Increase communication with CMDU from patients with diverse ethnic backgrounds, through posters, websites, staff meetings, and social media. Providing appropriate information in the top 5 languages spoken in Wolverhampton on how to access antiviral treatment to prevent poor health outcomes from COVID-19 in this vulnerable group.

Results of first PDSA Cycle

The data collection period: 01/02/24-17/03/24

Total number of referrals received during this time: 59, 40 random patients were chosen from the 59 referrals received.

Results:

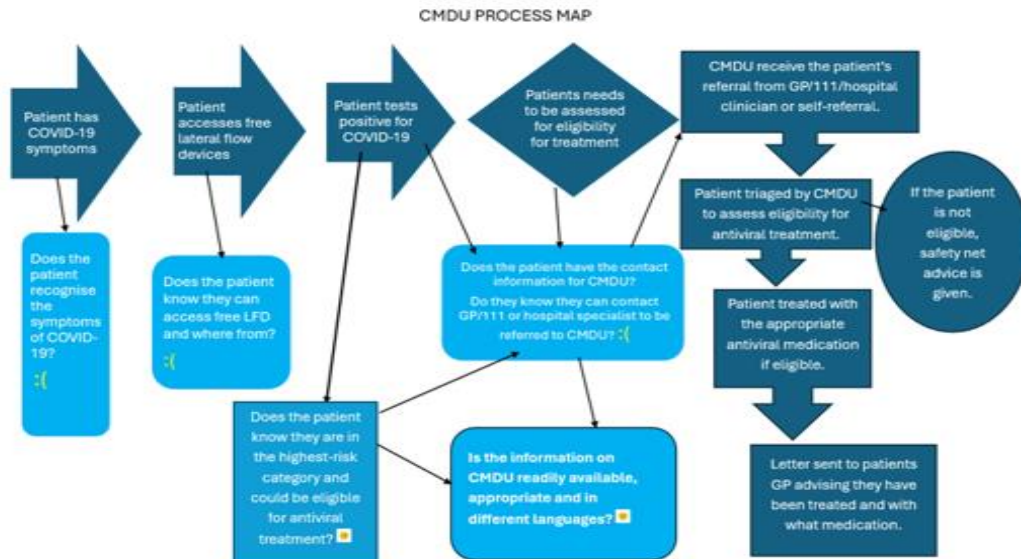
- 33 White British patients, one Black Caribbean, one White Irish, two Asian Indian, one Black African, one Asian Pakistani and one patient chose not to disclose. This equates to:
- 12.5% of the 40 random patients were non-White compared to 7.5% previously
- 87.5% white British/White Other/White Irish

Covid Medicines Delivery Unit

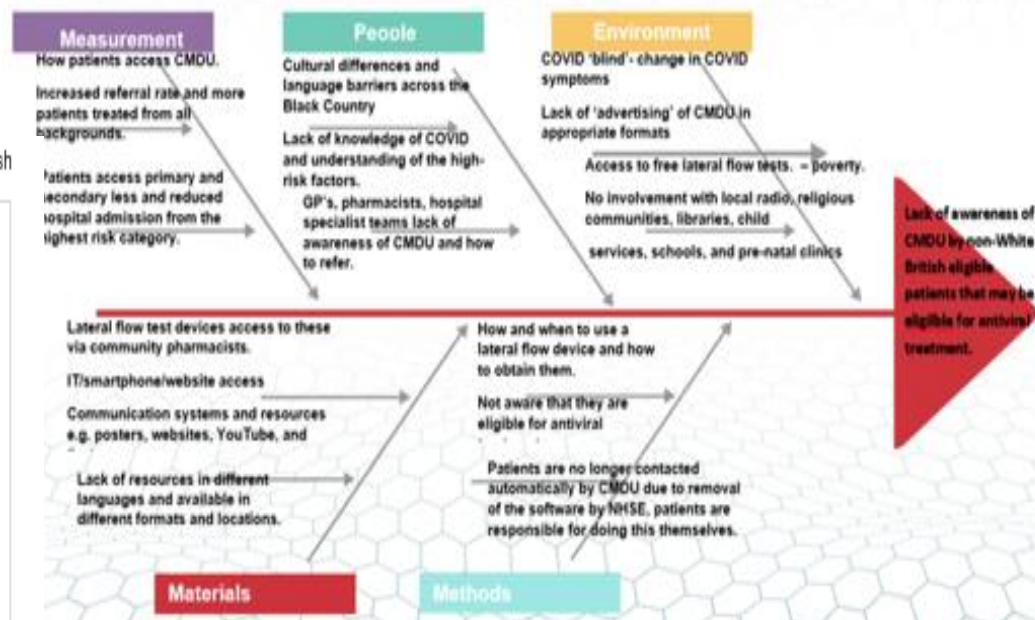
Summary:

The initial results of the PDSA cycle show a significant improvement in effectively reaching the diverse population of the Black Country. This improvement is directly linked to the inclusion of CMDU information on Trust Websites and its presentation to clinicians. Additionally, a YouTube video is currently in production, and final approval for the poster is pending before it can be printed and publicly displayed. These resources are set to promote CMDU to a broader audience effectively, and we anticipate even more significant progress following the second PDSA cycle.

Current State



FISHBONE DIAGRAM



CMDU Information Poster

COVID-19
 کوفید-19
 کوؤفید-19
 ਕੋਵਿਡ-19

Treatment is now available if you test positive for COVID. Scan the QR Code for further information.

العلاج متاح الآن إذا كانت نتيجة اختبار فيروس كورونا إيجابية. قم بمسح رمز الاستجابة السريعة لمزيد من المعلومات. جارء سرکردن ٹیسٹا ہرردہستہ ٹیگٹر ہاتھو پشکنہ کت بؤزہ تیف بوو بؤ کوؤفید۔ کوؤدی QR سکان بکہ بؤ زانباری زیاتر۔

Jeśli Twój wynik badania na COVID-19 jest pozytywny, możesz teraz skorzystać z leczenia. Zeskanuj kod QR, aby dowiedzieć się więcej.

ਜੇ ਤੁਹਾਡਾ COVID ਲਈ ਟੈਸਟ ਪਾਜ਼ਿਟਿਵ ਆਉਂਦਾ ਹੈ ਤਾਂ ਹੁਣ ਇਲਾਜ ਉਪਲਬਧ ਹੈ। ਹੋਰ ਜਾਣਕਾਰੀ ਲਈ QR ਕੋਡ ਨੂੰ ਸਕੈਨ ਕਰੋ।

Acum puteți primi tratament dacă ați avut rezultat pozitiv la testul COVID. Scanați codul QR pentru mai multe informații.

COVID-19 can make people very sick. Treatment is free for people who are at high risk of getting very ill from COVID-19. This aims to prevent them needing to go into hospital. To get treatment, you need to have symptoms of COVID-19 and have tested positive. You can get free lateral flow tests from your local pharmacist. If you have any symptoms of COVID-19. Symptoms are a fever, sore throat, cough, loss or change in taste or smell take a test for COVID-19. If you test positive you should call your GP to be referred to the COVID Medicine Delivery Unit (CMDU) as soon as possible. You can also contact CMDU yourself to be assessed. It is important to start treatment as soon as possible after your symptoms start.

07775 752740 (Mon - Fri 0800 - 1600) | rwh-tr.cmdu.wolverhampton@nhs.net

برجی مسح رمز الاستجابة السريعة
 تکیاہ QR هکه سکان بکه
 Zeskanuj kod QR
 ਸਿਰਥਾ ਕਰਕੇ QR ਕੋਡ ਨੂੰ ਸਕੈਨ ਕਰੋ
 Scanați codul QR

Working in partnership
 The Royal Wolverhampton NHS Trust
 Walsall Healthcare NHS Trust